



CALIBRATE
COMMERCIAL

OFFICE LEASE LAKEWOOD, CO

7000 W. 14TH AVE. LAKEWOOD, CO 80214



\$

PRICE/SF:
\$17.00-\$19.00

SF

BUILDING / LOT SIZE:
2,872 SF / 12,768

MG

LEASE TYPE:
MODIFIED GROSS

1-2

LEASE TERM:
1-2 YEARS



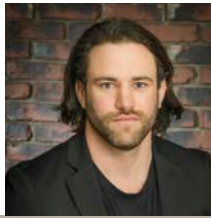
JAKE LOWELL
JAKE@CALIBRATERE.COM
303.718.4594



ZACK JENKINS
ZACK@CALIBRATERE.COM
720.750.6283

INTERIOR PHOTOS

JAKE LOWELL
JAKE@CALIBRATERE.COM
303.718.4594



INTERIOR PHOTOS

ZACK JENKINS
ZACK@CALIBRATERE.COM
720.750.6283



PROPERTY INFO

7000 W. 14TH AVE.



CALIBRATE
COMMERCIAL

LOCATION: LAKEWOOD, COLORADO
ADDRESSES: 7000 W 14TH AVE
PRICE/SF: \$17.00-19.00/SF
BUILDING SIZE: 2,872 SF
LOT SIZE: 12,768 SF
LEASE TYPE: MODIFIED GROSS
LEASE TERM: 1-2 YEARS

TENANT TO VERIFY ACCURACY OF SQUARE FOOTAGE

PROPERTY HIGHLIGHTS:

- ACCESS TO 6TH AVENUE AND WADSWORTH MAKES IT EASY TO TRAVEL TO AND FROM ALL AROUND THE DENVER METRO AREA
- LARGE PARKING LOTS ON TWO SIDES OF THE BUILDING WITH 22 TOTAL PARKING SPACES
- LEASE TERM IS PERFECT FOR TRANSITIONING AND GROWING BUSINESSES
- MIX OF LARGE OPEN AREAS AND PRIVATE OFFICES GIVES YOU FLEXIBILITY WHEN IT COMES TO YOUR BUSINESS' NEEDS



JAKE LOWELL
JAKE@CALIBRATERE.COM
303.718.4594



ZACK JENKINS
ZACK@CALIBRATERE.COM
720.750.6283