

**1441 N. EMERSON ST.**  
Denver, CO 80218



**\$500,000**

**3 BR / 1 BA Victorian Home in  
Denver's Capitol Hill Neighborhood**

---

**2 Dedicated Off-Street Parking  
Spaces.**

---

**Laundry Room with Washer/Dryer  
Connections**

---

**Great Value Add Opportunity!**



**Kyle Malnati**  
Kyle@CalibrateRE.com  
303.482.2828

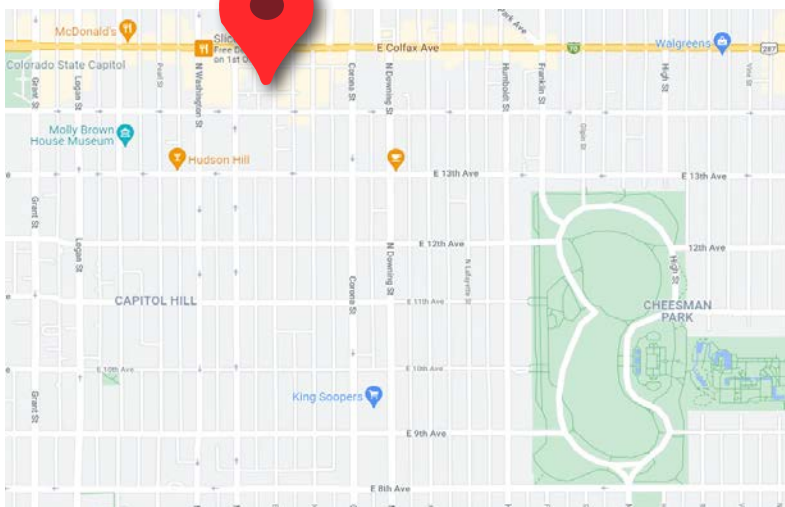
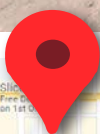
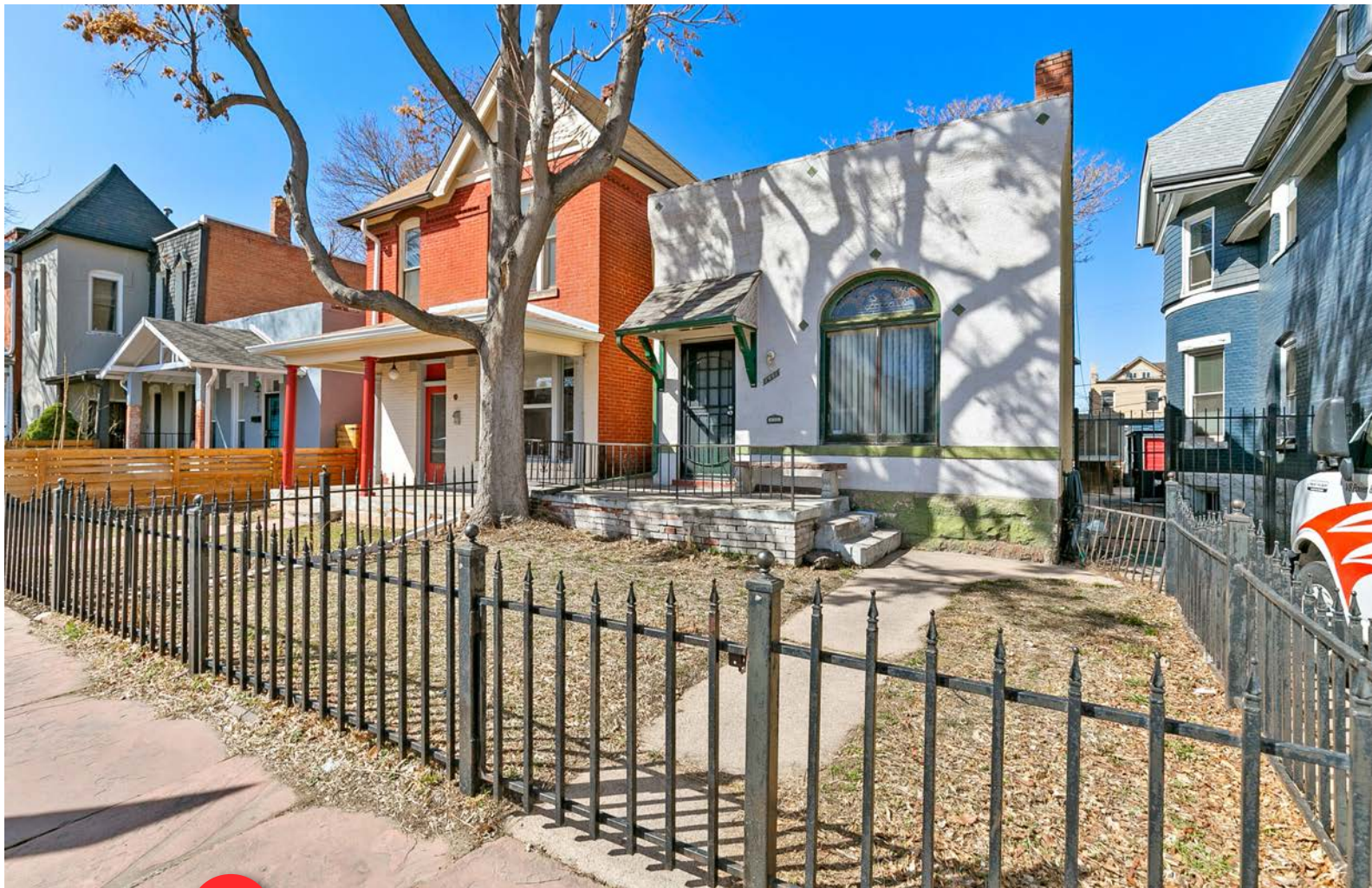
# Interior Photos - Main Floor



# Additional Photos



# Location Highlights



Close Proximity to Denver Botanic Gardens, Capitol Building, Denver Public Library

Lot Size: 3,120 SF

Nearby Parks Include: Cheesman Park and Congress Park

Popular Nearby Retail: The Corner Beet, Charlie's Denver, Gyroz, Alpine Dog Brewing Company, and The 1Up Arcade Bar

Building Size: 984 SF