

111 S. CLERMONT ST.
Denver, CO 80246



\$1,100,000



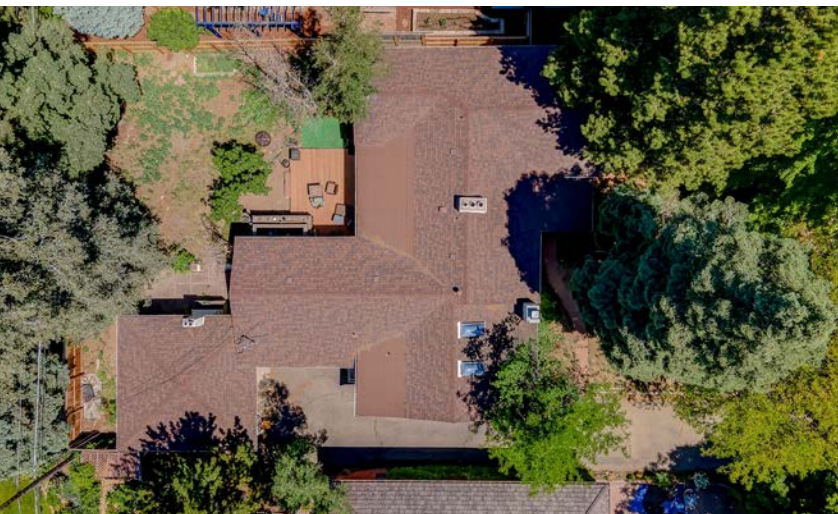
3 bed/2.5 bath Ranch in Denver's Prestigious Hilltop Neighborhood, Featuring Wide, Leafy Streets, High-End Homes and Spacious Parks

Classical Details: Built-ins, Crown Molding, and Hardwood Flooring

Possible Development / Scrape Opportunity in one of the Most Illustrious Areas of Denver!

Large Bay windows, Skylights and Glass Doors help Fill this Ranch with Light

Two Fireplaces on Main Floor



Kyle Malnati
Kyle@CalibrateRE.com
303.358.4250



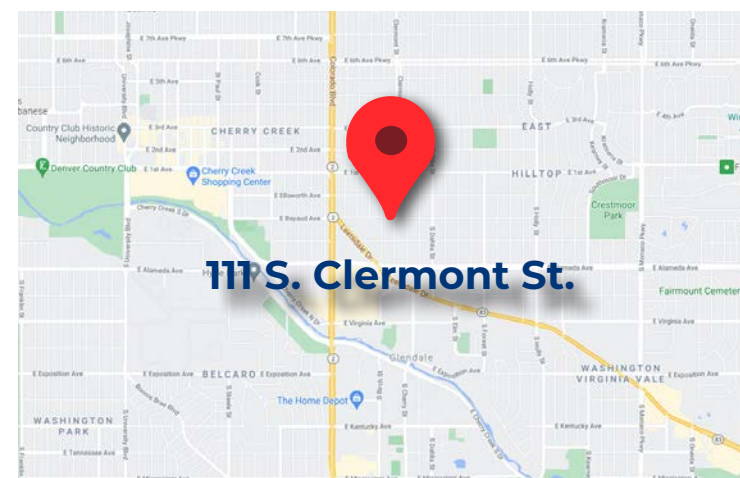
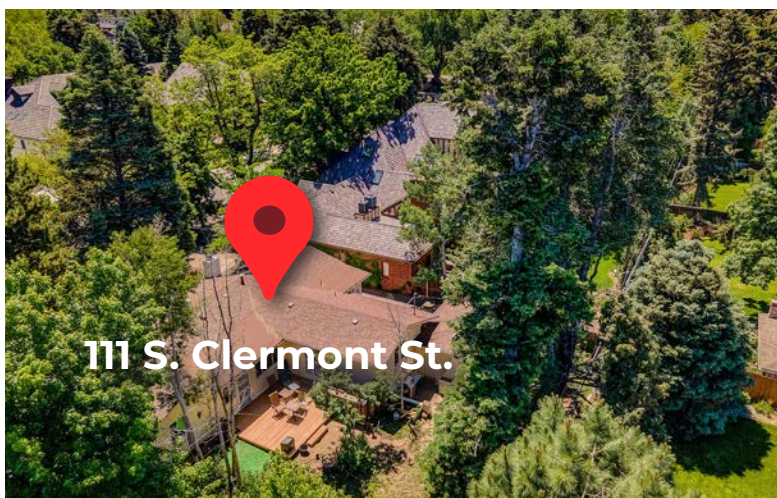
Interior Photos

Kyle Malnati
Kyle@CalibrateRE.com
303.358.4250



Location Highlights

Kyle Malnati
Kyle@CalibrateRE.com
303.358.4250



Lot Size: 9,940 SF
Building Size: 2,308 SF

Close by Restaurants: Park Burger, Pete's Fruits and Vegetables, High Point Creamery, and Daz Bog Coffee

Close Proximity to Popular Retail: Cherry Creek Shopping Center with Luxury Retailers like Louis Vuitton, Burberry, and Tiffany & Co,

Nearby Parks Include: Cranmer Park featuring 23 Acres of Open Space, Burns Park, Crestmoor Park, and Robinson Park