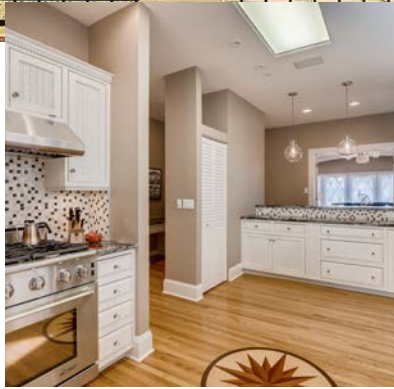


1320 Race Street



Special Features

Living Room

- Large living room great for entertaining
- Restored original chandelier
- Grand fireplace with tortoise shell tile
- Original moulding, arches, and details
- Remote controlled blinds

Kitchen

- High end stainless steel appliances
- Granite countertops and marble backsplash throughout
- Beadboard cabinets with dentil
- Open kitchen with natural light
- Ample counter space

Family Room

- Large family room located in basement
- Fireplace with tan brick mantel
- Tall ceilings with crown molding
- 3/4 bathroom with unique tile
- Huge storage closet

Exterior

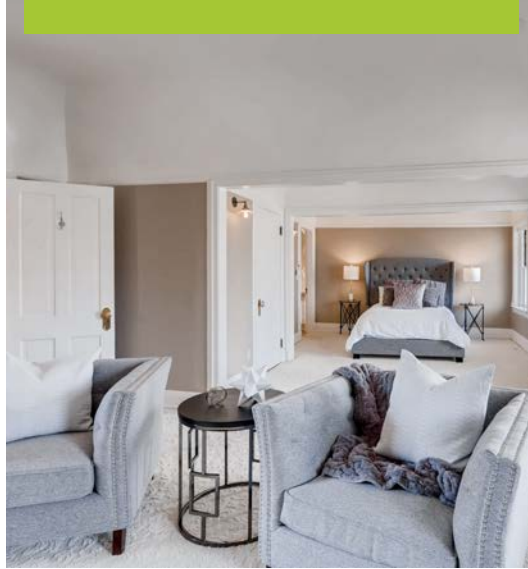
- Italian Renaissance architecture
- Intricate fencing with pineapple accents
- Juliet balcony
- 2 car garage with newer roof
- Full irrigation system
- Backyard oasis with deck & lighting



Kyle Malnati & Ana Jewett

303-482-2828

1320 Race Street



Special Features

Master Bedroom

- Vast 28ft long room
- 3 coved ceilings
- Fireplace with original mantel
- Large walk-in closet with built-ins

Guest Bath

- White mosaic floor
- Ceramic white subway tile with black accent stripes and border
- Shower/tub set
- Custom wood and granite pedestal
- Upscale lighting

Master Bathroom

- Bright and beautiful master bathroom
- Historic 1920's Waterford chandelier
- 5 piece bath with claw foot tub and freestanding claw foot shower
- Granite topped dark wood double vanity
- Privacy toilet in separate room

Systems

- Triangle Tube on-wall boiler system
- High velocity A/C with compressor
- Honeywell IP Thermostats
- DSC Alarm system with over 30 zones of security, fire and water monitoring
- Focal indoor and outdoor speakers on main floor, back deck, and master bath
- Lutron lighting remote controlled zones for main floor, master, and sunroom

Basement Apartment

- Versatile space
- 1 Bedroom, 3/4 bathroom
- Private kitchen
- Access to basement laundry
- Separate entrance
- Rent this space to help pay mortgage
- \$1,200 in monthly income (estimated)



Kyle Malnati & Ana Jewett

303-482-2828